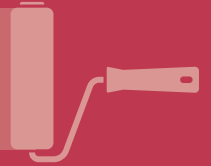


WHAT YOU NEED TO KNOW...

ABOUT THE NDIS IN NSW

The National Disability Insurance Scheme (NDIS) gives people with disability choice and control over the supports they receive. NSW is preparing for the rollout of the NDIS. This involves working with people with disability, their families, carers, the sector, service providers, peak bodies and other government agencies.



WHEN IS THE ROLLOUT PLANNED?

THE NDIS WILL BE ROLLED OUT IN NSW BETWEEN

1ST JULY 2016

AND 30 JUNE 2018

1 JULY 2017

1 JULY 2016

HOW MANY PEOPLE WILL RECEIVE SUPPORT?



EARLY ROLLOUT IN NEPEAN BLUE MOUNTAINS AREA

Around

2000

CHILDREN AND YOUNG PEOPLE WILL RECEIVE SUPPORT UNDER THE NDIS



EST

64,000 INCREASE

IN PEOPLE WITH DISABILITY RECEIVING SUPPORTS IN NSW UNDER THE NDIS

*THIS NUMBER INCLUDES AROUND 78,000 PEOPLE CURRENTLY RECEIVING DISABILITY SUPPORT.



WHERE CAN I GET MORE INFORMATION?

Learn more about the NDIS in NSW and check when the NDIS will be available in your local area via the NSW NDIS website – www.ndis.nsw.gov.au

For advice about your eligibility for the NDIS or how to access the scheme, please contact the National Disability Insurance Agency (NDIA) by visiting ndis.gov.au or call **1800 800 110**.

