

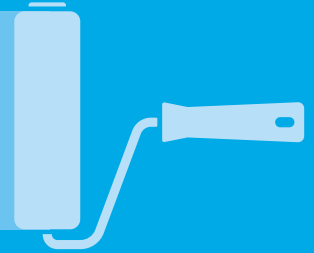
WHAT YOU NEED TO KNOW...

ABOUT THE JOURNEY TO THE NDIS

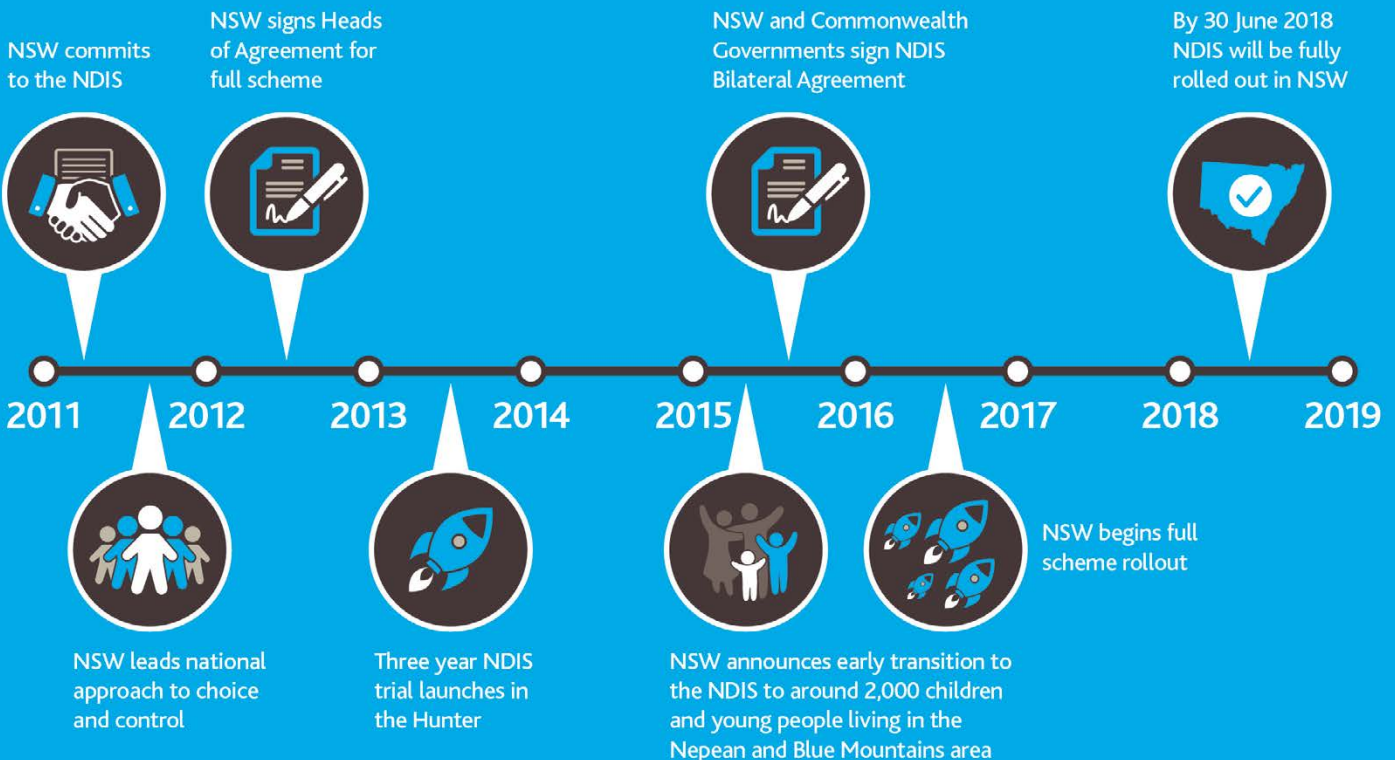
NSW agreed to the NDIS because we want people with disability to have choice, control and the support they need to live the lives they want.

Over the past decade, NSW has taken a series of steps to improve the way people with disability access services. These reforms helped pave the way for the introduction of the NDIS.

The NDIS will make a real difference in the lives of thousands of people with disability



NSW WAS THE FIRST STATE TO SIGN UP TO THE NDIS



WHERE CAN I GET MORE INFORMATION?

Learn more about the NDIS in NSW and check when the NDIS will be available in your local area via the NSW NDIS website – www.ndis.nsw.gov.au

For advice about your eligibility for the NDIS or how to access the scheme, please contact the National Disability Insurance Agency (NDIA) by visiting ndis.gov.au or call **1800 800 110**.

