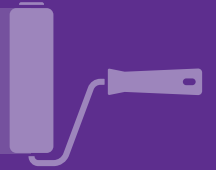


# WHAT YOU NEED TO KNOW...

ABOUT THE TRANSFER OF DISABILITY SERVICES IN SOUTH EASTERN SYDNEY

By 30 June 2018 all NSW Government services provided directly to people with disability will move into the non-government sector. This will allow the NSW Government to transfer every dollar of its disability budget directly into the NDIS, where it will be used to provide supports to the people who need them.



## WHEN IS THE TRANSFER HAPPENING?

THE TRANSFER OF DISABILITY SERVICES WILL BE COMPLETE IN NSW BY

# 30<sup>TH</sup> JUNE 2018



# 35,987

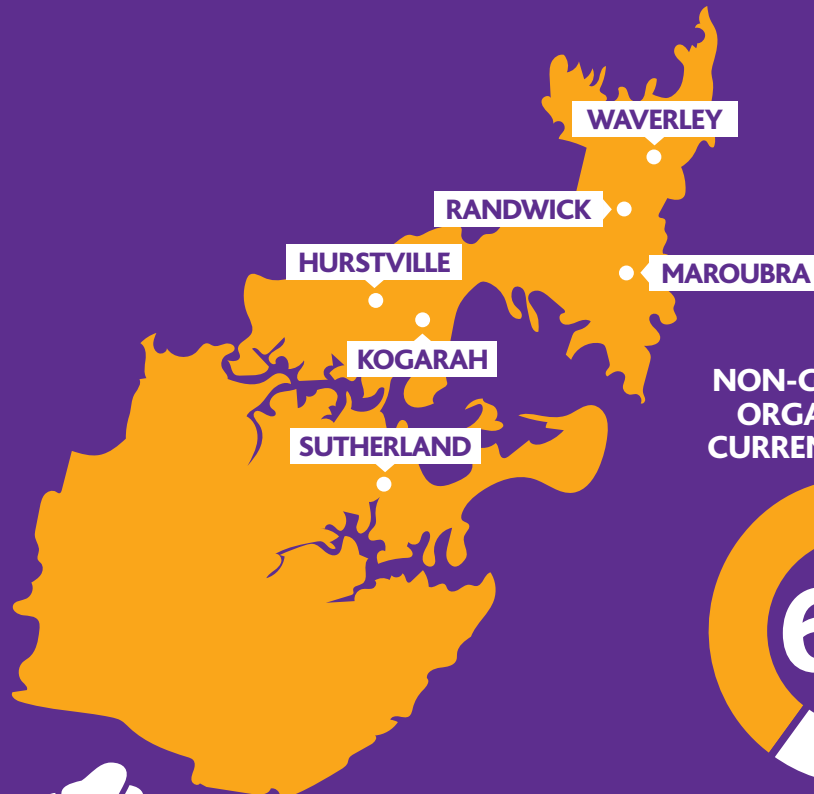
HOURS OF CLINICAL SERVICES DELIVERED



NSW IS TRANSFERRING ITS DISABILITY SERVICES TO THE NON-GOVERNMENT SECTOR IN ORDER TO PROVIDE

# GREATER CHOICE

FOR NDIS PARTICIPANTS



NON-GOVERNMENT ORGANISATIONS CURRENTLY PROVIDE



OF DISABILITY SERVICES IN NSW

TRANSFERRING OUR DISABILITY SERVICES ALLOWS

# \$600 MILLION MORE EACH YEAR

TO BE AVAILABLE FOR THE NDIS IN NSW



# 32

NUMBER OF ADHC OWNED AND OPERATED GROUP AND RESPITE HOMES



## WHERE CAN I GET MORE INFORMATION?

For more information about the transfer of disability services go to [www.adhc.nsw.gov.au/disabilitytransfer](http://www.adhc.nsw.gov.au/disabilitytransfer) or email [SpecialistDisabilityServices@fac.nsw.gov.au](mailto:SpecialistDisabilityServices@fac.nsw.gov.au)