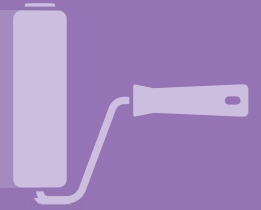


WHAT YOU NEED TO KNOW...

ABOUT SUPPORT FOR PEOPLE WITH DISABILITY, THEIR FAMILIES AND CARERS

We are working in partnership with the National Disability Insurance Agency with communities across NSW to ensure they are ready for the NDIS. This includes people living in rural and remote areas, Aboriginal communities and people from culturally and linguistically diverse backgrounds.

We are committed to supporting people with disability, their families and carers in the move to the NDIS.



LOCAL AREA COORDINATORS
WILL ASSIST PEOPLE TO GET SUPPORT UNDER THE NDIS

INFORMATION, LINKAGES AND CAPACITY BUILDING

ILC will help connect people with disability, their families and carers, with disability and community support.



BUILDING INDIVIDUAL AND COMMUNITY CAPACITY
AND PROMOTING THE INCLUSION OF PEOPLE WITH DISABILITY



ABILITY LINKS
WILL BUILD CAPACITY AND LINK PEOPLE WITH THEIR LOCAL COMMUNITIES



FIND LOCALISED INFORMATION AND PEER SUPPORTS
IN YOUR LOCAL COMMUNITY



CONTINUITY OF SUPPORT

No one will be disadvantaged in the move to the NDIS. Anyone currently receiving specialist disability support, who are not eligible for the NDIS, will maintain the same outcomes they received before the NDIS.



QUALITY AND SAFEGUARDS

A national quality and safeguarding system will be in place in July 2018. Until it is in place, the existing NSW and Commonwealth quality assurance arrangements will continue.



Visit www.ndis.nsw.gov.au for the latest information on the rollout of the NDIS in NSW. You can find out when the NDIS will be coming to your area using the postcode checker and learn more about the scheme with our fact sheets and guides. There are resources for people with disability, their families and carers and service providers. Materials are available in accessible formats, including Easy English, text to voice and Auslan, and also in various community languages.



WHERE CAN I GET MORE INFORMATION?

Learn more about the NDIS in NSW and check when the NDIS will be available in your local area via the NSW NDIS website – www.ndis.nsw.gov.au

For advice about your eligibility for the NDIS or how to access the scheme, please contact the National Disability Insurance Agency (NDIA) by visiting ndis.gov.au or call **1800 800 110**.