

Who is who in the NDIS?

This document helps explain key roles and terms in the National Disability Insurance Scheme (NDIS)

Agencies and services that support you

National Disability Insurance Scheme (NDIS)

A new way of providing support for Australians with disability, their families and carers. The NDIS will provide about 460,000 Australians under the age of 65 with a permanent and significant disability with the reasonable and necessary supports they need to live a full life.

National Disability Insurance Agency (NDIA)

The Commonwealth government organisation administering the NDIS. The role of the NDIA is to implement the National Disability Insurance Scheme (NDIS).

Market

A collection of providers offering products and services to NDIS participants.

Mainstream services

These are the government systems that provide services to the Citizens of NSW e.g. health, mental health, education, justice, housing, child protection and employment services.

Early Childhood Early Intervention (ECEI)

The ECEI approach aims to ensure parents or primary caregivers are able to support young children who have developmental delays or disabilities. The intention of the ECEI is to reduce the effects of disability and to improve the person's functional capacity.

People who help protect your rights and interests

Participant

A person who meets the NDIS access requirements.

Nominee

A nominee is a person who is appointed to act and make decision for a participant who does not have a parent or guardian.

Quality and Safeguards Commission

The Q&S commission will support participants by improving the quality of services and making sure services are safe for participants.

Guardian

A guardian is legally appointed to make specific health, lifestyle and welfare decisions for people who are unable to make decisions with support, or when the support they have around them is not working in their best interests.

Child's representative

A child's representative is someone who makes decisions for a child (a person under 18 years of age) with disability or who acts on their behalf. This could be the child's parent or guardian.

People in the community who help you

Local Area Coordinator (LAC)

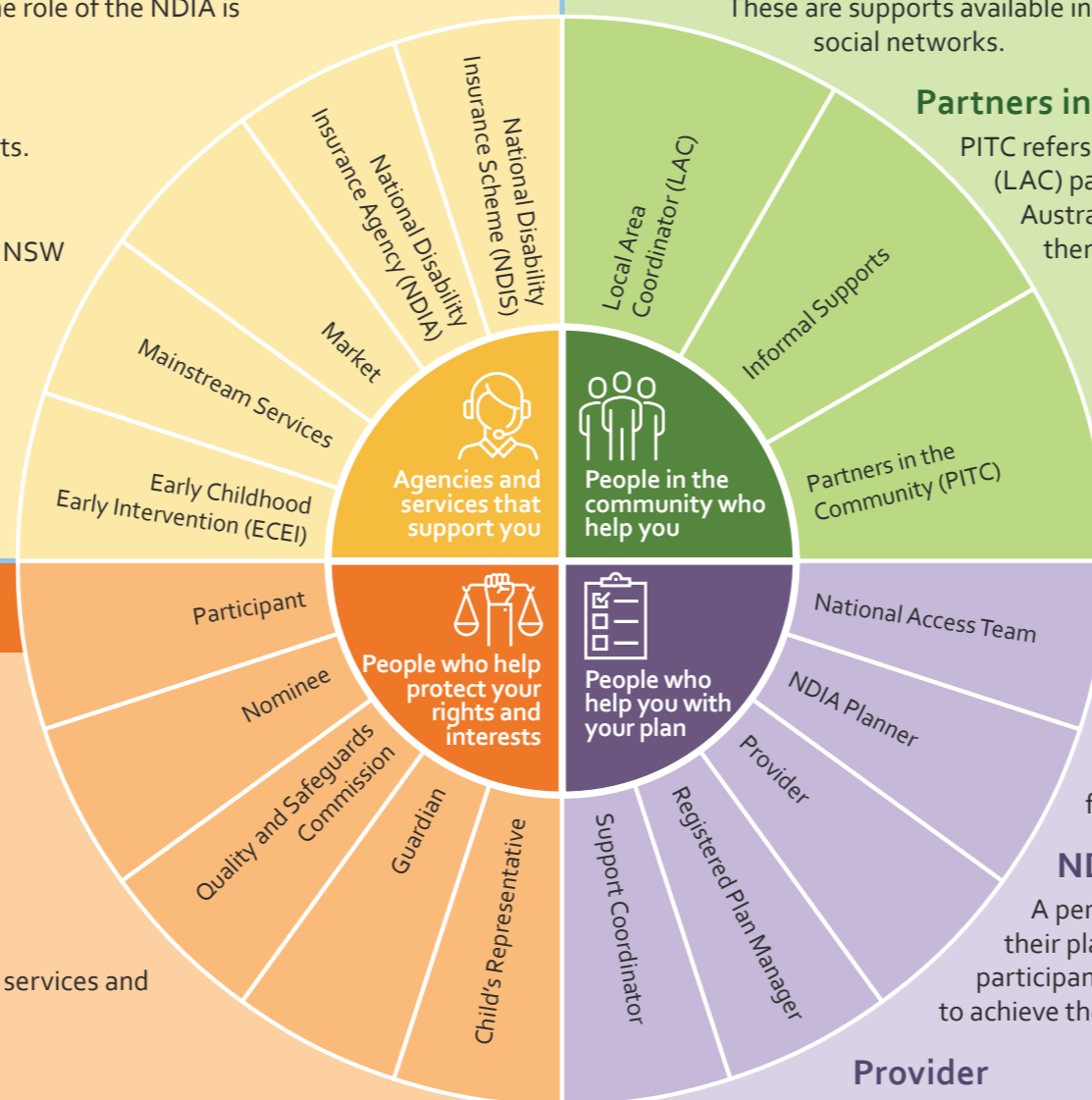
LACs are local organisations working in partnership with the NDIA, to help participants, their families and carers access the NDIS. LACs will help participants write and manage their plans and also connect participants to mainstream services and local and community-based supports.

Informal supports

These are supports available in the community, not funded by the NDIS and can include family, friends and social networks.

Partners in the Community (PITC)

PITC refers to NDIS Early Childhood Early Intervention (ECEI) and Local Area Coordinator (LAC) partners, who work together to deliver the NDIS in local communities across Australia. ECEI and LAC partners help participants navigate the NDIS and connect them with other community services where appropriate.



People who help you with your plan

National Access Team

NDIA staff members who work in locations around Australia to review NDIS access applications and decisions relating to a participant's eligibility for the NDIS.

NDIA Planner

A person appointed by the NDIA to assist a participant to develop and finalise their plan. The planner undertakes goal based planning or assessment with a participant, assists them to identify desired outcomes and to develop their NDIS plan to achieve these outcomes.

Provider

Someone who provides products or services to help participants achieve the goals in their plan. Participants can choose their providers and change providers at any time.

Registered Plan Manager

An individual or support provider who helps a participant to manage their funding. A participant can use a plan manager to manage some or all of the funding for supports in their plan.

Support Coordinator

Support Coordinators help participants understand their plan. A support coordinator will help participants choose and connect with service providers and coordinate community and mainstream services.

Find out more about the NDIS at [ndis.nsw.gov.au/ndis-resources/](https://www.ndis.nsw.gov.au/ndis-resources/)